



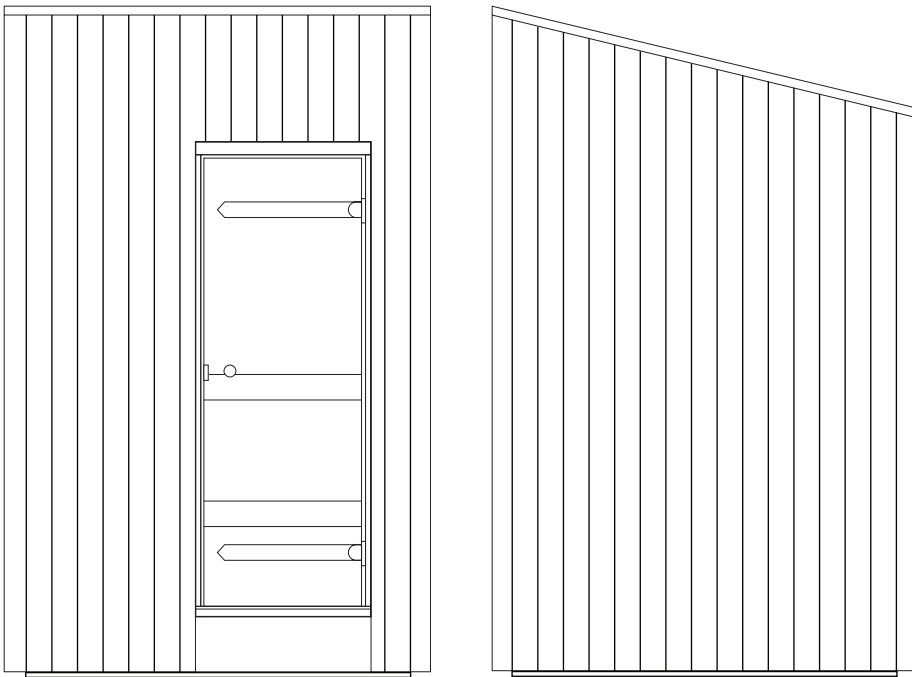
URSELL  
POOLS & WELLNESS

# OSLO SAUNA

GUIDE & SPECIFICATION

NATURAL SAWN WESTERN RED CEDAR

WARM  
NATURAL  
TACTILE  
WOOD



# OSLO SAUNA

**Research in Finland\* suggests that regular sauna use reduces the chances of contracting Alzheimer's and dementia, so as well as the more well-known benefits, destressing, detoxing, cleansing and the social aspects, the sauna has to be an essential tool to aid a healthy wellbeing and a happy lifestyle.**

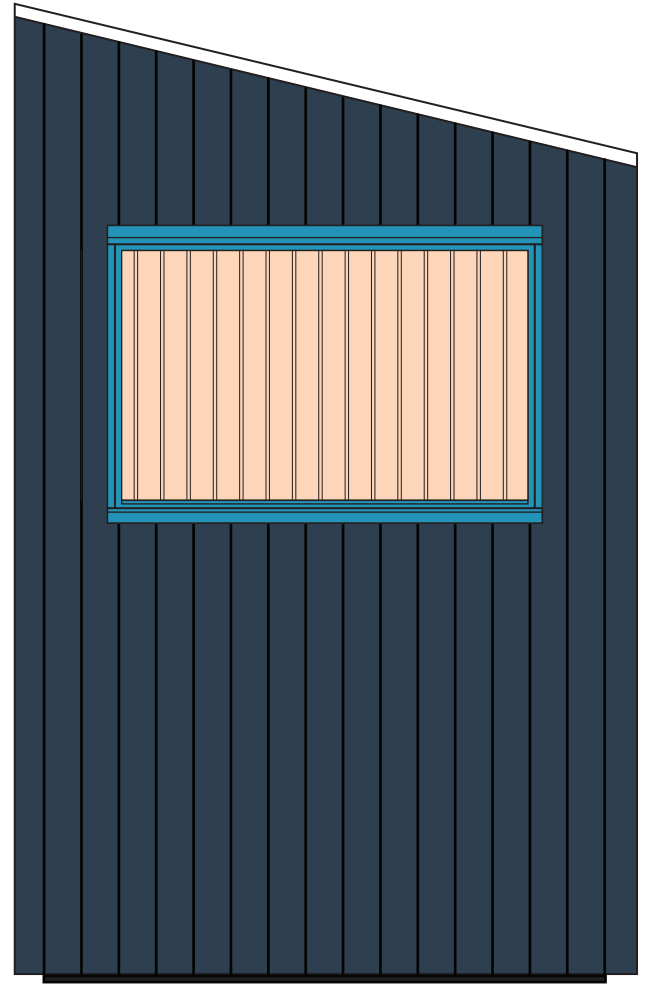
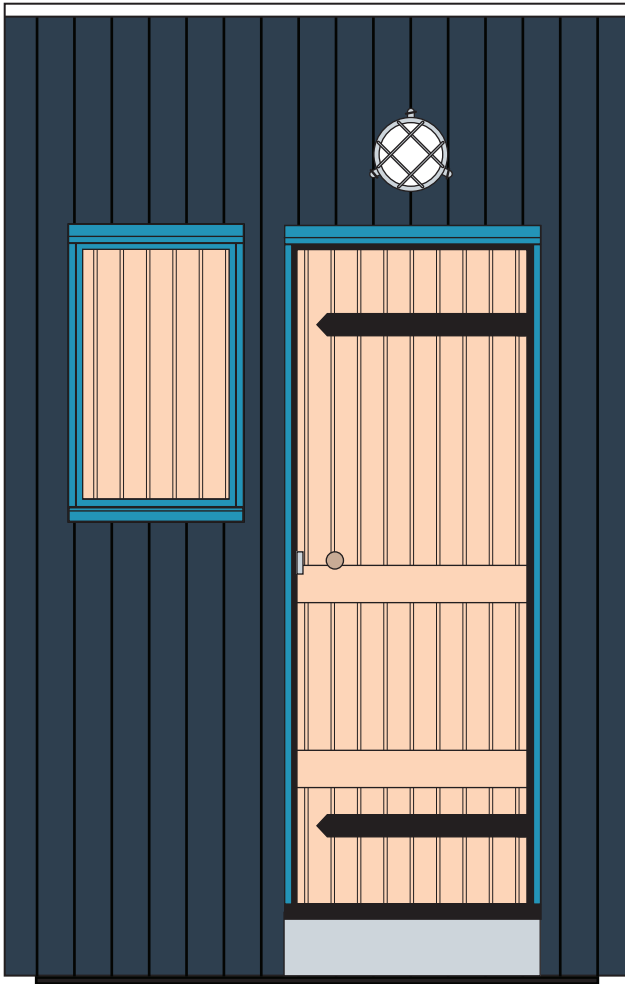
Apart from designing and creating bespoke sauna solutions and buildings for both indoor and outdoor settings, we have created the Oslo Sauna which has been carefully designed as a modular product, this enables us to offer a unique well-built outdoor sauna at a highly competitive cost.

The building comes with a choice of internal and external cladding options and a choice of 4 sizes.

If you have a specific idea about cladding materials please let us know and we will most certainly be able to accommodate your ideas, we love talking about design and delivering great products to our customers, so please just ask.

The roof is galvanised corrugated steel completed with stylish galvanised guttering and detailing.

We are passionate about the details and know for sure you will notice and appreciate the lengths we go to to deliver well considered products.



## WINDOW OPTIONS

Some people love to hunker down in their sauna and feel cocooned and separate from the outside world, while others want to look out and beyond. Maybe your sauna will be in an idyllic setting or maybe you like to watch the weather from the heat of the sauna. Whatever your motivations we offer versions of the Oslo Sauna with or without windows.

You could have a front or side window, or if you really want to connect with the outside world you could even have both.

Having a window will possibly require a larger heater, please see our price sheet for cost implications.

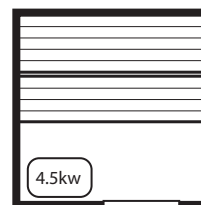
As a default the windows are finished in the same colour as the door frame to create a cohesive design flow, we suggest a dark grey or black, or indeed if you have a particular favourite colour that would work well with the dark grey or western red cedar cladding, then we will be happy to work with you on this, please discuss at the time of purchase.



OSLO SAUNA WITH A FRONT  
ORIENTATED WINDOW

THE CLADDING IS  
SAWN WESTERN RED CEDAR  
WITH RANDOM WIDTH BOARDS

# SIZE/SITE GUIDE



Our Oslo Sauna comes in 4 sizes, to suit most domestic settings. If you require something bigger, please let us know and we can discuss your individual needs and either be able to scale up the Oslo Sauna, or we will be very happy to discuss an entirely bespoke solution based on our modular construction process.

## SITE REQUIREMENTS

We need a level concrete base or patio, to place the sauna on, the finished sauna is heavy and needs to be well supported, this should be at least the same dimensions as the external width and depth, but ideally larger.

We will place a concrete slab (or similar) in each corner. This is to lift the framework off the concrete slab, it will allow air flow and keep the timber away from any sitting water - we will also put DPC (Damp Proof Course) at any point of contact between the timber and the concrete slabs, all of these processes will keep your building healthy and well.

We will discuss all site preparation with you at the initial stages of the consultation process.

## ELECTRICS

The sauna needs a 40Amp supply for the heater and a 13amp switched fused spur for the light(s).

The base and electrical works are to be carried out by the customer prior to delivery and assembly.

We will discuss the position of the isolator and fused spur at the initial stages of consultation/design.

2620mm X 1670mm X 1670mm  
(External dims HxWxD)

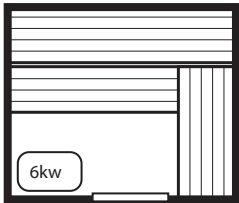
2000mm X **1400mm X 1400mm**  
(Internal dims HxWxD)

**4.5kw Heater**

**2 Benches**  
500mm / 400mm

Internal Cladding - Choice of:  
Spruce / Aspen / Alder

External Cladding - Choice of:  
Stained sawn timber  
@50mm/100mm/150mm/Random  
Sawn Western Red Cedar  
@50mm/100mm/150mm/Random



2620mm X 2270mm X 1670mm  
(External dims HxWxD)

2000mm X 2000mm X 1400mm  
(Internal dims HxWxD)

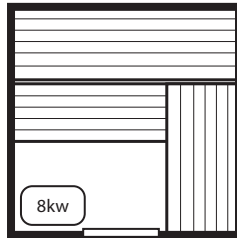
**6kw Heater**

**3 Benches**

500mm / 400mm

Internal Cladding - Choice of:  
Spruce / Aspen / Alder

External Cladding - Choice of:  
Stained sawn timber  
@50mm/100mm/150mm/Random  
Sawn Western Red Cedar  
@50mm/100mm/150mm/Random



2620mm X 2270mm X 2270mm  
(External dims HxWxD)

2000mm X 2000mm X 2000mm  
(Internal dims HxWxD)

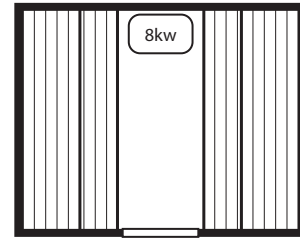
**8kw Heater**

**3 Benches**

600mm / 500mm

Internal Cladding - Choice of:  
Spruce / Aspen / Alder

External Cladding - Choice of:  
Stained sawn timber  
@50mm/100mm/150mm/Random  
Sawn Western Red Cedar  
@50mm/100mm/150mm/Random



2620mm X 2770mm X 2270mm  
(External dims HxWxD)

2000mm X 2500mm X 2000mm  
(Internal dims HxWxD)

**8kw Heater**

**4 Benches**

500mm / 400mm

Internal Cladding - Choice of:  
Spruce / Aspen / Alder

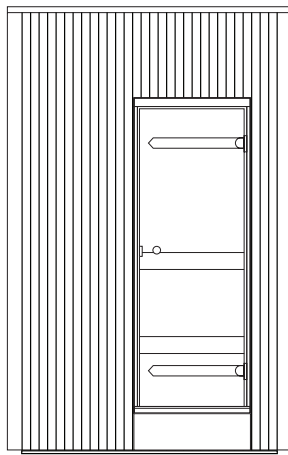
External Cladding - Choice of:  
Stained sawn timber  
@50mm/100mm/150mm/Random  
Sawn Western Red Cedar  
@50mm/100mm/150mm/Random



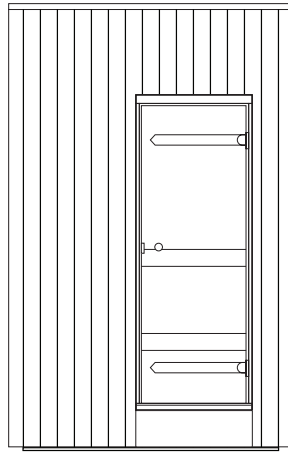
LEFT TO RIGHT  
SPRUCE / ASPEN / ALDER



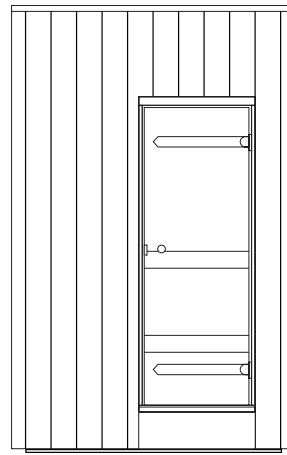




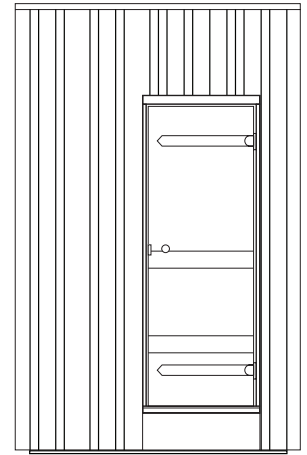
50mm



100mm



150mm



RANDOM

## EXTERIOR

**We are offering 2 exterior cladding options at 3 different widths and a random combination of all 3. These all come in at the same cost.**

**The interior cladding is available in 3 different materials which does have cost implications, please ask for details.**

**If you have any specific requirements, maybe you wish to match an existing structure or love a certain look, again please ask, we are always pleased to talk about materials.**

We use either stained, treated, sawn timber or a completely natural un-treated, sawn Western Red Cedar.

The Western Red Cedar is UK grown and cut at a sawmill in South Wales, so in timber terms it's a pretty local product. It's pink/buff when freshly cut, but weathers to a beautiful silver grey.

The stained sawn cladding is a more generic pre-treated material which we stain dark grey giving it a contemporary, architectural look.

We use 3 different widths or a random width option, combining all 3.

The widths are:  
150mm / 100mm / 50mm

The cladding is fixed vertically which gives the structure an elegant look especially if the thinner boards are used.



STAINED SAWN TIMBER



SAWN WESTERN RED CEDAR

STAINED SAWN TIMBER

CLEANSE  
RELAX  
REVITALISE  
DETOX





**URSELL**  
POOLS & WELLNESS

Ursell Pools & Wellness  
476 Bath Rd  
Saltford  
Bristol BS31 3DJ

Email  
[sales@ursell.com](mailto:sales@ursell.com)

Web  
[ursell.com](http://ursell.com)

Telephone  
**01225 874 874**

Opening Hours  
Monday to Friday: 08.00 - 17.00  
Saturday: (Summer only) 10.00 - 16.00  
Closed Sunday